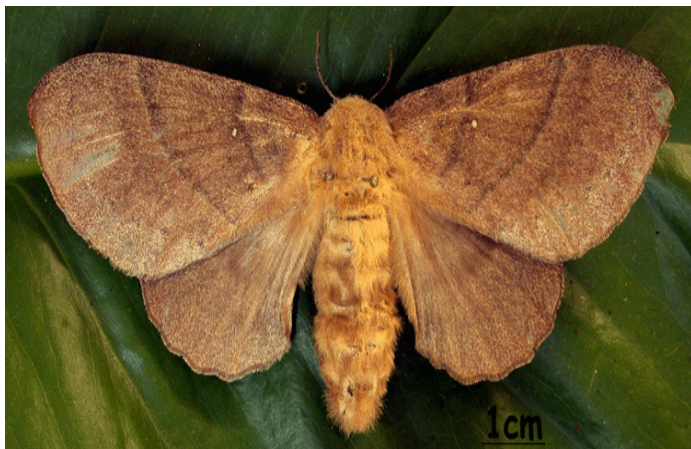


KAINKAIN BATAPLAI BILONG NAIT (MOTHS) LONG OHU KONSEVERSEN ERIA.

Olgeta dispela piksa bilong bataplai bilong nait (moths) em stap long dispela eria. Olsem wonem bai em stap yet na ol lain pikinini bilong bihain tu bai I lukim na save olsem, em tru kala bilong ples bilong ol stret!? Laikim bus na olgeta samting (resoses) insait long bus o yu laik bagarapim na pinisim olgeta.

Yu yet skelim...



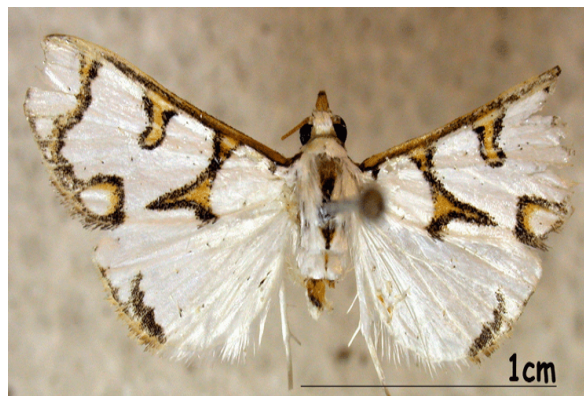
Dispela em bataplai (moth) bilong nait. Snek bilong em save kaikai lip bilong diwai Laulau (*Syzizium*) na I luk olsem igat planti grass antap long skin bilong em. Na I kam aninit long bikpela famili bilong ol bataplai (moths) ol I kolim *Noctuidae*.



Na dispela em bataplai (moth) bilong nait. Sampela save raun long san taim tu. Snek bilong em save kaikai lip bilong *Mosong diwai na diwai long gaden*. Em I kam aninit long bikpela famili bilong ol bataplai (moths) kolim long *Uraniidae*.



Dispela em bataplai (moth) bilong nait. Snek bilong em I liklik tru, em I hait aninit long lip o wokim liklik tret haus long haitim em long ol birua bilong em olsem pisin, spaida na etc.. Em tu kam aninit long narapela bikpela famili bilong bataplai (moths) kolim long *Tortricidae*.



Dispela em narapela bataplai (moth) bilong nait. Snek bilong em sampela taim I rolim lip na haitim em yet na kaikai insait. Na I kam aninit long narapela bikpela famili bilong ol bataplai (moths) kolim *Crambidae*.